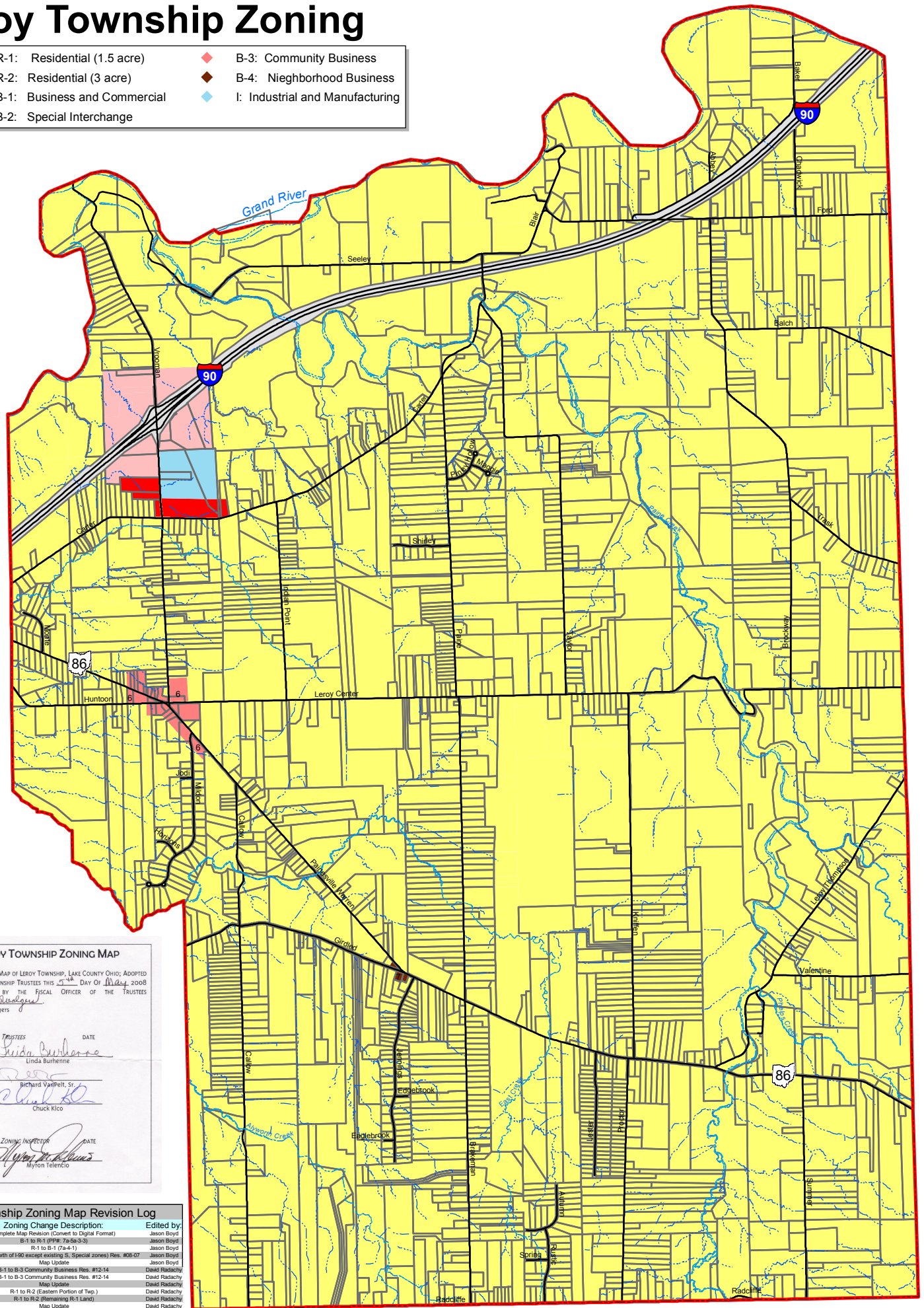


Leroy Township Zoning

- ◇ R-1: Residential (1.5 acre)
- ◇ R-2: Residential (3 acre)
- ◇ B-1: Business and Commercial
- ◇ B-2: Special Interchange
- ◇ B-3: Community Business
- ◇ B-4: Neighborhood Business
- ◇ I: Industrial and Manufacturing



LEROY TOWNSHIP ZONING MAP

AMENDED ZONING MAP OF LEROY TOWNSHIP, LAKE COUNTY OHIO; ADOPTED BY THE LEROY TOWNSHIP TRUSTEES THIS 31ST DAY OF July, 2008 AND CERTIFIED BY THE FISCAL OFFICER OF THE TRUSTEES

Sharon Rodgers
Sharon Rodgers

TRUSTEES DATE

Linda Burhenne
Linda Burhenne

Richard VanPelt, Sr.
Richard VanPelt, Sr.

Chuck Kico
Chuck Kico

ZONING INSPECTOR DATE

Myron Telencio
Myron Telencio

Leroy Township Zoning Map Revision Log

#	Date:	Zoning Change Description:	Edited by:
1	April 2005	Complete Map Revision (Convert to Digital Format)	Jason Boyd
2	12/2/2006	B-1 to R-1 (PP# 74-5a-3-3)	Jason Boyd
3	5/15/2007	R-1 to B-1 (74-4-1)	Jason Boyd
4	4/17/2008	R-1 to R-2 (north of I90 except existing S. Special zones) Res. #08-07	Jason Boyd
5	April 2008	Map Update	Jason Boyd
6	7/9/2012	B-1 to B-3 Community Business Res. #12-14	David Radachy
7	7/9/2012	B-1 to B-3 Community Business Res. #12-14	David Radachy
8	10/16/2012	Map Update	David Radachy
9	1/20/2014	R-1 to R-2 (Eastern Portion of Tap.)	David Radachy
10	8/11/2014	R-1 to R-2 (Remaining R-1 Land)	David Radachy
11	8/11/2014	Map Update	David Radachy

